



# SWAN:

# Our Work So Far

## 2020/2021

**Southern Women's Aid Network (SWAN)**

07935430380 | [info@swanlondon.org](mailto:info@swanlondon.org)

[swanlondon.org](https://www.swanlondon.org) Registered UK Charity: 1188649



# Contents

Chairperson's Message	3
Our Story	5
Our Team	6
Our Partners/Collaborators	7
 Our Work At Home	 8
- Foodbank	8
- Asylum Seekers/Refugee Aid	10
- Soup Kitchens	12
- Community Support	14
- Hampers	16
- Laptops for Deprived Children	17
 Our Work Abroad	 18
- Greece	18
- Bosnia	20
- Lebanon	22
- Pakistan	24
- Gaza/Palestine	26
- Yemen	28
- Azerbaijan	30
 Seasonal Campaigns	 32
- Ramadan 2020	32
- Abroad	34
- Ramadan 2021	36
- Qurbani	38
 Financial Breakdown	 39
Aspirations for 2022	40

## Chairperson's Message



I think we can agree that 2020 was an extraordinary year. With the onset of COVID-19, most of us in the first world transitioned online and if non-cognitive beforehand, we're now acutely aware of how fragile we really are and how we all stand – (or fall) – together.

For those unable to work, furlough payments were made available across much of the western world and whilst times have been tough for many, A recent UNDP reports shocking figures about poverty worldwide:

Across 109 countries and 5.9 billion people:

- 1.3 billion people are multidimensionally poor
- About half (644 million) are children under age 18
- Nearly 85 percent live in Sub-Saharan Africa (556 million) or South Asia (532 million)
- More than 67 percent live in middle-income countries

The day-to-day reality of life for multidimensionally poor people paints a grim picture:

- 1 billion each are exposed to solid cooking fuels, inadequate sanitation and

substandard housing

- 788 million live in a household with at least one undernourished person
- 568 million lack improved drinking water within a 30-minute roundtrip walk

Those already on the brink of survival have been squeezed further. The impact of Covid19 coupled with wars and natural disasters has been catastrophic for so many around the world and so many on our doorstep. Whilst our local supermarkets were ravaged when the initial virus panic kicked in, for those living in poverty, stock piling food was simply not an option.

For our team at SWAN, our registration as a charity in March 2020, coincided with the first lockdown and the closure of the foodbank at Streatham Islamic Centre – that we have been running since Ramadan 2012. The decision to provide a Covid19 response with

doorstep food parcels, proved to be the beginning of a very busy time for our team and volunteers. We became a life saver for so many families in the community. As our service grew we were flooded with referrals from other organisations, establishing SWAN as a recognised provider of aid in South London. We have built relationships and partnerships with charities and community groups in London, who have assisted in our growth and on our journey.

Ramadan 2020 was a Ramadan like no other, families had opportunities to spend time together and despite, or perhaps because of the pandemic sweeping the world, it felt like a really spiritual time. Sadly because of the closure of mosques and restrictions on communal prayers, many who previously relied on iftar meals at the mosques, had nowhere to turn. This led to our 200 Meals a Day campaign which provided Iftar and Suhoor meals from Thornton Heath and Croydon Islamic Centres. This campaign was incredibly well received by hundreds of beneficiaries and well supported by the South London community. The end of Ramadan signaled the start of our Monday Soup Kitchen at Thornton Heath Islamic Centre which has been providing meals to 120+ refugees, low income families and homeless people every week since.

In 2021 we came back bigger and better with our 1000 meals a day campaign. An ambitious task, but one that exceeded targets. We successfully provided meals throughout Ramadan in London, Greece, Bosnia, Yemen, Somalia, Pakistan and on the Ivory Coast. The end of Ramadan 2021 resulted in our second weekly soup kitchen at Croydon Islamic Centre, which has been providing over 160 meals every week since.

For a small charity, we have reached so many people, suffering so many hardships, in London and in so many countries around the world. Our bread project in Lesvos,

Greece has consistently provided 1000's of flatbreads every week. We have responded to emergency situations and provided food packs, shelter and clothing to refugees in Bosnia, medicine and food aid in Afghanistan, food packs in Azerbaijan and Lebanon and family grants and Eid vouchers in Gaza.

In London, through our community support project – SWAN500 – we have helped families in a number of different ways; from purchasing essential aids to paying debts. But we haven't stopped there, we have provided laptops to children from low income families, we have carried out countless aid collections for refugees and we have distributed clothes, shoes and food to hundreds of beneficiaries. Together with Tooting Community Kitchen we run a soup kitchen every Saturday, specifically for refugees.

Suffice to say that I have been very busy. Establishing three weekly soup kitchens (one in partnership with Tooting Community Kitchen) and numerous emergency responses abroad have been gruelling tasks. However, an idea is just that, an idea. None of the work SWAN has been able to do would have been possible without the SWAN team to lead, our volunteers, our partners, our contributors and our donors.

Therefore, I would like to thank everyone that donated last year. Without you, nothing would have been possible. I pray you are rewarded for your humanity and kindness and that every single penny stands testimony for you and your loved ones, on the day of judgment.

Thank you,  
**Saiqa Ali**  
**BEM**





## Our Story

**Southern Women's Aid Network (SWAN)** is a UK registered charity (1188649) which was founded by women and is led and operated by women. SWAN has been operating since 2012 in London and has been a recognised provider of food support via the foodbank it runs for South London Islamic Centre for the past 9 years.

Since the Covid19 pandemic it has responded to the needs of the community by working in collaboration with other grassroots organisations; to provide doorstep food packs to vulnerable individuals and families across London. SWAN has also been providing aid to refugees in Greece since 2018 and works in partnership with other charities to reach struggling families in wartorn and poverty stricken countries abroad.

Since the Covid19 restrictions in March 2020 started, SWAN has provided hundreds of food packs to vulnerable families and served thousands of meals from our weekly soup kitchens and through homeless outreach initiatives in London. Furthermore, through our Refugee outreach project we have provided everything from baby milk to bicycles to refugees around London. We have also provided food and essential items to women and their children who have suffered domestic violence and are living in refuges.

Our relief efforts abroad have provided essential aid to countless families in Bosnia, Lebanon, Yemen, Greece, Azerbaijan and Palestine. Our Bread project in Lesvos, Greece has provided a minimum of 3000 flatbreads every week to refugees who often have nothing else to eat.

We have also coordinated van loads of aid for Syrian refugees and have implemented the installation of 11 water pumps and provided microfinance business grants to families in Pakistan to encourage lasting change.



Swan Food Bank - food donation



Greece - Delivering 3000 flatbreads every week to refugees

## Our Team

### Our team consists of our Board of Trustees

- Saiqa Ali (Chair/CEO)
- Amber Siddiqui (Treasurer)
- Saman Jung (Secretary)
- Nasreen Khawaja
- Naheed Nizam
- Smaira Wahid

### Our Operations Team

- Kareena Nelson (Operations Manager)
- Misba Mansoor (Team Leader)
- Nuzhat Ejaz
- Abida Iftikhar
- Jeni Edwards (Relationships and Aid Coordinator)



## Our Partners/Collaborators



Team Humanity



Tooting Community Kitchen



Global Humanitarian Relief Foundation



Charity Right



Muslim Hands Open Kitchen



Dons Local Action Group



Critical Care



Jusfine Food



Care4Calais

Arila Projects



# Our Work At Home

## Food Bank

Foodbanks provide emergency food and support to people locked in poverty; in the UK, more than 14 million people are living in poverty – including 4.5 million children.

Food poverty, social isolation and unemployment affect many people across the UK, with many people having limited funds to buy food for themselves and their loved ones. In 2020/21 approximately 2.5 million people used a foodbank in the United Kingdom, over 600 thousand more than the previous year. The number of foodbank users has increased every year, from 346,992 people using foodbanks at the time of SWAN's genesis.

SWAN Foodbank which has been running since 2012 by our amazing team of committed volunteers, provides food parcels to the community every Tuesday in Streatham Mosque.

**Over the past 12 months we have provided food parcels to over 2000 families, during the lockdown we provided over door to door food parcels deliveries.**

We have teamed up with a number of organisations and receive weekly food donations from Dons Charity, JR Butchers, and Gails Bakery, and Supermarkets such as Lidl's, Waitrose, M&S, Aldi, and Tesco.

We also receive regular donations from our local community, Orchard Primary School and Balham Mosque.







## Asylum Seekers/Refugee Aid

### ‘Asylum seeker’

A person who has applied for asylum under the 1951 Refugee Convention on the Status of Refugees on the grounds that they have a well-founded fear of persecution should they return to their home country.

### ‘Refugee’

An asylum seeker whose claim has been successful.

There are currently at least 5630 asylum seekers in London. The most common countries of origin are Albania (1124), Nigeria (465), Iran (423), Pakistan (384) and Iraq (369).

Most asylum seekers are unable to pay for their own housing. They are also unable to claim benefits. They are therefore provided with housing (initial and dispersed accommodation) by the Home Office via contracts with Serco, Mears Group and Clearsprings Read Homes. Asylum dispersal accommodation in London is provided by Clearsprings. Under this scheme, asylum seekers are not able to choose where they live.

## What are London local authorities doing to support asylum seekers and newly recognised refugees?

Local authorities support asylum seekers directly or indirectly in a range of ways, from carrying out property inspections to providing adult social care. However, the most substantial area of support often arises when asylum seekers are asked to move on from Home Office provided dispersed accommodation.

Once an asylum seeker receives a decision on their asylum application, there is just 28 days until they have to leave their dispersed accommodation. This leaves little time to find alternative accommodation, obtain a National Insurance number, find work, or establish a welfare benefits claim. They also usually lack the basic requirement to gain a tenancy in the private rented sector: a deposit.

**At SWAN we are committed to supporting refugees, asylum seekers and migrants. Why? Because everyone has a right to be treated with dignity.**





**Everyone has a right to be safe from persecution and everyone has the right to make a better life.** The stories we hear are heartbreaking and frustrating. We wish we could do more. But for now, we do what we can, whenever and wherever we can to help. It's our duty as human beings to show compassion and empathy without labelling who is worthy of help. We all bleed the same and we all have human rights.

From 2020 to present SWAN has provided hundreds of Refugees/Asylum seekers with aid including **clothes, shoes, coats, baby items, phones, hygiene products, supermarket vouchers and food.**



We did an aid run to two hotels housing refugees in West London in December. We took a van and car load of winter clothes, shoes, clothes, books and toys and distributed £1260 Tesco/Asda gift cards for food. The desperation was overwhelming. It's utterly heartbreaking that families are living in such dire conditions in the UK. So many kids with no shoes and no coats. One little boy just wanted a football. Imagine in a world full of kids with electronics and expensive toys, how little he must have to want a football so much.

The food provided in hostels/hotels is often of a very poor quality and families are desperately in need of nourishment. Our Soup Kitchens provide refugees/Asylum seekers with hot food, fruit and treats.

## Soup Kitchen

A Soup Kitchen is a place where a hot meal is offered to those in need of a hot meal for free or sometimes at a below-market. Frequently located in lower-income neighborhoods, soup kitchens are generally often run by volunteers. There is a rough estimate of 25 known soup kitchens across London, with SWAN running three of them.

SWAN started our first soup Kitchen at Croydon Mosque during the Ramadan period in 2020. Since lockdown and with the increasing rise of financial strain on families, in less than 12 Months, SWAN has opened a further two more soup kitchens across south London; Monday at Thornton Heath mosque, Wednesday at Croydon Mosque and Saturday at Euro Hotels Clapham South where we work in conjunction with Tooting Community Kitchen to provide hot meals for free to those who need it.

We have weekly rotas where volunteers offer their time and food donations from bottles of water to baked cakes. Our hot meals are purchased from which allows us to provide a nutritious meal at a budget cost thus enabling us to feed hundreds of people each month across South London.

**SWAN has  
opened a further  
two more soup  
kitchens across  
south London**









## Community Support

The past year has been a strange one for social interaction and personal relationships. On the one hand, lockdown measures and work-from-home arrangements have made it harder to meet and connect with others, so feelings of isolation and loneliness are on the rise.

However, that hasn't undermined the importance of community. On the contrary, these changes have prompted many people to reconsider the significance of neighborhood feeling, bringing the concept of meaningful belonging back into the spotlight.

During the past year we have seen our community coming together to support each and every one of our initiatives; from

donating funds or food, baking for our soup kitchens, packing dates and volunteering at the foodbank, for aid collections and the soup kitchen. The community has provided invaluable support to our team. Together we have helped so many families and individuals who have been desperately in need of help.

Through our SWAN500 project we have supported multiple families in a number of ways; from fixing a ceiling, replacing carpet, buying cookers and fridges, paying off debt and helping the homeless off the streets. The support we have been able to provide has been priceless.









## Hampers

Since 2020 we have distributed hundreds of hampers to women's refuges, the elderly and disadvantaged families in the community.

For a family suffering hopelessness and loneliness receiving a hamper with essential items and treats sends a message of support and recognition that is invaluable. The feedback we receive for our hampers is incredibly heartwarming.





## Laptops for Deprived Children

For thousands of children across the UK, one of the most challenging aspects of the past year has been finding the means to complete their schoolwork.

Around 1.8m children in the UK (around 9 per cent) did not have access to a laptop, desktop computer or tablet at the start of the pandemic, according to estimates from Ofcom, while more than 880,000 children are living in households with only a mobile internet connection. Among homes with an annual income of less than £13,500, around 18 per cent do not own or have access to a desktop or laptop, according to research from Deloitte.

The lack of access to electronic devices to help children participate in remote lessons and complete homework threatens to undo a decade's worth of social mobility, widening the gap between rich and poor pupils nationwide.

SWAN responded to the need for laptops by providing laptops to children at Ernest Bevin School.



# Thank you



SWAN are a registered UK charity. They have a community hub and run foodbanks and a soup kitchen in south London and also provide food aid to refugees in Europe.



**FOR YOUR GENEROUS DONATION  
TOWARDS OUR  
'LAPTOP FOR LIFE CHANCES' CAMPAIGN.**



**WE'RE DELIGHTED TO ANNOUNCE THAT 37 NEW LAPTOPS HAVE BEEN  
DELIVERED!**

# Our Work Abroad

## Greece



Refugees in Lesbos, Greece have escaped from war zones, crossed hostile borders, and braved the sea, only to end up on the Greek island of Lesbos, where the EU's racist, xenophobic, and Islamophobic migration policies intensified during the coronavirus pandemic.

Since our CEO's visit in 2019 to Moria – long a symbol of the failures of EU migration policy – has burned to the ground. Thousands of people are living in Kara Tepe II, a quickly erected, makeshift camp on a windswept, lead-contaminated, flood-prone patch of land next to the sea.

Conditions in Kara Tepe II are arguably worse than in Moria, where the situation was already beyond dismal. And greater restrictions on refugees' movement due to the pandemic have seriously hampered their ability to access basic services, like healthcare.

The sanitation facilities in Kara Tepe II are inadequate, and refugees are only provided two meals a day, often consisting of rotten, inedible food. Many refugees

used to rely on grocery stores outside the camp to supplement meager rations. But the pandemic has made even this small, autonomous act more difficult as security guards use social distancing measures as an excuse to deny refugees access to stores.

Our bread project in Lesbos started in Moria camp in 2019 and proved to be a lifesaver for countless families when the camp burned down as it was the only regular source of food for many weeks. **SWAN has consistently provided 1000s of flatbreads to refugees every week.**

Since the beginning of COVID lockdowns, there has been a 66 percent increase in attempted suicides and other self-harming behaviours amongst refugees on Lesbos.



It is clear that this is what happens when racist, xenophobic, and Islamophobic border policies collide with a pandemic: People who have already been dehumanised are neglected, or worse, targeted.

This dehumanisation started long before the pandemic, but COVID has provided a pretext for it to continue largely under the radar and with impunity – as evidenced by the increase in violent and illegal pushbacks at the EU's external borders in the past year.

Since we started our relief efforts in Lesvos we have successfully distributed:

- Prayer Mats
- Clothes
- Shoes
- Dates
- Food Packs
- Qurbani Meat
- Iftar meals
- Weekly flatbreads – Total: 157,600





## Bosnia Border



Bosnia-Herzegovina became the main hub for migrants hoping to reach wealthier European countries after authorities closed the previous migration route through Serbia and Hungary in 2016. Now it's the shortest possible way to access the EU.

But the bloc is failing to effectively address the humanitarian crisis unfolding on its doorstep. Meanwhile, Bosnia's poverty, complex political system, corruption, high unemployment — and its people's difficulty in burying the legacy of their past war — all stoke resentment against migrants, creating a crisis within a crisis.

**Nearly 70,000 refugees and migrants from the Middle East, South Asia and Africa have passed through Bosnia-Herzegovina in the past three years, according to the International Organization for Migration.**

Today, some 6,000 live in five main camps run by the United Nations agency in coordination

with local authorities scattered across the country, according to the IOM.

In response to a plea for help from a desperate family stuck in the snow on the border we first started our relief efforts in Bosnia, when we helped hundreds of families with food, winter clothing, shoes and materials to repair shelters.

Since then, our partner Salam Aldeen has visited the Bosnian border multiple times and our latest distribution provided foodpacks to families living in horrendous conditions. The situation on the border is unlikely to change anytime soon, with more and more refugees traveling across the route. Consequently as one of the only charities assisting these desperate and displaced families, it is inconceivable that we can stop efforts to aid and assist as best we can.







## Lebanon

For nearly two years now, Lebanon has been assailed by compounded crises—specifically, an economic and financial crisis, followed by COVID-19 and, lastly, the explosion at the Port of Beirut on August 4, 2020.

Of the three, the economic crisis has had by far the largest (and most persistent) negative impact. The Spring 2021 Lebanon Economic Monitor finds that Lebanon's economic and financial crisis is likely to rank in the top 10, possibly top three, most severe crises episodes globally since the mid-nineteenth century.

In a report written by The World Bank earlier this year, the bank blamed what it called “deliberately inadequate policy responses” from the governing elite for worsening a financial meltdown “likely to rank in the top 10,

possibly top three, most severe crisis episodes globally since the mid-nineteenth century”.

**More than half the population is now probably below the poverty line, said the report.**

The 12-month inflation rate has risen to 157.9% in March this year from 10% in January last year. Unemployment has risen to nearly 40% late last year from 28% in February 2020. Access to healthcare has become limited.







## Pakistan

Pakistan's poverty rate has decreased in recent years. However, the country's current economic crisis, mixed with its fight against the COVID-19 pandemic, has put many Pakistani citizens out of jobs. This has further increased the poverty rate.

The government of Pakistan is doing its best to fight both the COVID-19 pandemic and poverty in Pakistan. So far the government has provided many social welfare programs at a scale that they have never done in history until now. However, there is so much more to do in order for the country to defeat poverty.

**The COVID-19 pandemic has disproportionately affected the poverty-stricken citizens in Pakistan.** These people consist of women, children, the elderly and people with disabilities. They are far more likely to suffer from malnutrition and their health may be weak. Thus, the virus has spread in poverty-stricken communities faster.

We have been working in collaboration with Global Humanitarian Relief Foundation (GHRF) for five years. We have supported each other's efforts to help as many people as possible.

During 2020 we have successfully carried out the following:

- 11 water pumps for families living in abject poverty
- Sewing machines and vocational training
- Microfinance grants for people to set up businesses.
- Winter grants and clothing for the elderly
- Food and practical aid to widows and orphans.







## Gaza, Palestine

The Gaza Strip is one of the worst places in the world to live. The long blockade imposed on the Gaza strip has crippled the economy, resulting in high levels of unemployment, food insecurity and aid dependency.

Thousands of families are living in slums and makeshift shelters that flood with freezing water when it rains and offer little protection from the harsh winter temperatures. Nights are bitterly cold and fuel for cooking and heating is scarce. Pregnant women and small children are living in these shocking conditions.

An estimated **260,500 people across the strip face gaps and vulnerabilities in accessing adequate shelter**, including the vulnerable poor, especially people with disabilities and widowed, separated or abandoned women and families displaced in 2014.

A survey released by the Shelter Cluster in OCHA in June 2018 found that 7% of households in Gaza are headed by females; the elderly (7.7 %); and people suffering from disability or chronic illness (17 %).

Many poor households live under unsafe and unhealthy houses that threaten their health. A study indicated that 37% of the poor households live in houses with a ceiling made of metal sheets or asbestos and are not adequately connected to the sanitation network, in addition 24% lack adequate health facilities unsuitable for human use and lack the minimum standards of public health, personal hygiene, privacy and human dignity. Due to this, chronic diseases spread among them (Islamic Relief Palestine, 2017).

In 2021 OCHA identified roughly 359,000 households across the Gaza Strip in need of winterization assistance as their residences are in a precarious condition, including leaking roofs, unsealed windows, damaged

walls and lack of insulation.

Gaza has a significant lack of quality medical care, a deficit in medical supplies and poorly paid medical personnel which has led to a protracted health crisis. This is compounded by the almost 13-year blockade by, and conflict with, Israel.

Fears are growing that Gaza is experiencing a third wave of COVID19, as the highly infectious Delta variant of the virus continues to spread throughout the densely-populated area. This threatens to overwhelm Gaza's already fragmented and under-resourced healthcare system and its exhausted workforce. According to the Ministry of Health, over 1,000,000 Gazans have been infected and total death are 4,100 since the beginning of the crisis. This is likely to get worse with less than 11% of people in Gaza having been vaccinated, and hospitals and clinics still suffering the effects of Israel's devastating military offensive in May during which at least 243 people, including more than 100 women and children, were killed in Gaza.

Following the conflict in May, we found a registered Charity in Gaza, with whom we have partnered and with whose support we have been able to provide the following:

- Hardship grants to victims of the war
- Food packs and qurbani meat
- Toys for children
- Covered the cost of 3 house refurbishments
- Provided 500 Covid19 medicine packs







## Yemen



For years already the poorest country in the Middle East and North Africa (MENA), Yemen now suffers from the worst humanitarian crisis in the world.

Embroiled in conflict since early 2015, fighting has devastated its economy—leading to serious food insecurity—and destroyed critical infrastructure. The UN has estimated that **24.3 million people in 2021 were “at risk” of hunger and disease**, of whom roughly 14.4 million were in acute need of assistance.

In 2020 we partnered with Food4Humanity and set up bread factories in Sanaa and Taiz in Yemen and distributed food packs to desperate families.

In 2021 we partnered with Charity Right to 100 food packs in Yemen in Ramadan. Since then we have supported 20 families with monthly Food Packs.





We have supported 20 families with monthly Food Packs



## Azerbaijan



Longstanding hostilities between Azerbaijan and Armenia over Nagorno-Karabakh renewed at the end of September 2020, dominating events in Azerbaijan for the rest of 2020 and into 2021. All parties to the conflict committed violations of international humanitarian law. The Azerbaijani military carried out attacks using banned cluster munitions.

National solidarity during the war served to suspend an intensifying conflict between the government and political opposition, however the government remained hostile to dissenting voices. Authorities misused restrictions imposed to slow the spread of Covid-19 to target critics, particularly those affiliated with the opposition Azerbaijan Popular Front Party (APFP).

By February 2021 the political unrest had a devastating effect on the civilian population and **we responded to a request to help 183 families with food packs who lost their homes and breadwinners in the unrest.**







# Seasonal Campaigns

## Ramadan 2020

### In London

Ramadan 2020 was an extraordinary one; due to the lockdown, many Muslims were unable to attend mosques, have iftar gatherings or congregate with their family and friends.

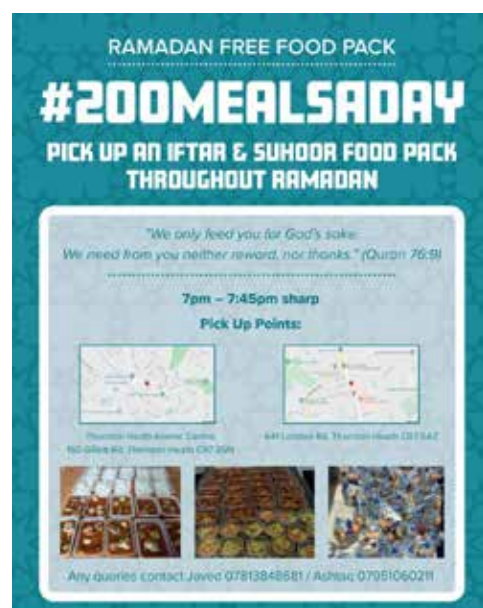
Furthermore, many vulnerable individuals and families who had always relied on mosques for hot meals in Ramadan couldn't get them because due to Covid19 restrictions, mosques were not open and those reliant on mosque iftars were unable to access meals.

SWAN felt it was imperative that these individuals and families had access to nutritious and wholesome food during fasting. Therefore, we together with Muslim Association of Croydon and Tooting Community Kitchen collaborated to ensure that no one went hungry during the month of Ramadan.

We launched the **#200MealsADay campaign** which commenced on the 23d April 2020.

**The initiative provided up to 200 iftar meals and suhoor packs to refugees, the elderly, disabled, NHS workers and poor families; every day during the month of Ramadan.**

We were inundated with requests for support from vulnerable families and this initiative provided a vital service for people observing Ramadan in South London and ensured that the most vulnerable on our doorstep were taken care of during the Ramadan.







## Abroad

In Lesvos, Greece we distributed:



**557**  
food packs



**1,330**  
prayer mats



**5,000**  
iftar meals



**64,000**  
bread









## Ramadan 2021

In Ramadan 2021 we went bigger and better and launched our **#1000 Meals A Day campaign** and these figures show how well our campaign went:



## Some of the things we did during Ramadan 2021

### At Home

**9,200**

Hot meals +



**4,350**

Suhoor packs



at Croydon and  
Thornton Heath  
Soup Kitchens

**211**

Food parcels  
at Foodbank



Provided Asda and Tesco  
vouchers which benefited

**342 people**

### Abroad

Family food packs provided:

**200**

in Bosnia

**250**

in Pakistan

**100**

in Yemen

**100**

Food packs  
for widows in Somalia

**16,000**

Flatbreads provided for  
refugees in Greece



**3,000**

Meals for orphans and children  
in need in the Ivory Coast

Essential clothes and mobile  
phones benefitting

**50 refugees** in London

**A container**  
of food and clothes  
to Yemen





## Qurbani

In 2020 we organised:

**13** Qurbanis in Greece

**10** Qurbanis in Yemen



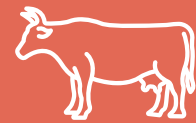
In 2021 we organised:

**14** Qurbanis in Bosnia

**13** Qurbanis in Greece

**17** Qurbanis in Yemen

**4** Cows in Gaza



## Financial Summary

### March 2020 – October 2021

Total (£)

#### Income

<b>Total Overseas Project Income</b>	<b>255,815</b>
<b>Total UK Income</b>	<b>188,896</b>
- Foodbank	13,317
- Soup Kitchen	22,169
- Total Zakat	38,006
- Ramadan 2020	48,352
- Ramadan 2021	60,171
<b>Total Aggregate Donations</b>	<b>444,712</b>

#### Expenditure

<b>Total Expenditure</b>	<b>422,878</b>
--------------------------	----------------



## Aspirations for 2022

### At Home

Subject to the continued funding and practical support from our donors and supporters we plan to continue running all our existing projects and collaborating with our partners.

Every year the need for the Foodbank keeps growing and the numbers keep increasing at the Soup Kitchens. As do the number of refugees and asylum seekers. We envisage that there will be a need for our services and we will embrace the opportunity to strengthen existing partnerships and form new ones to effectively serve those in need in London.

### Abroad

We plan to continue supporting refugees in Europe and responding to emergencies when required. But, our main focus will be establishing a new bread project in Northern Greece, home refurbishments and aid provision in Gaza and a food project in Afghanistan.





## Annual Report 2020 – 2021

**Southern Women's Aid Network (SWAN)**

31 Whitehorse Road, Croydon, CR0 2JH

07935430380 | [info@swanlondon.org](mailto:info@swanlondon.org) | [swanlondon.org](https://www.swanlondon.org)

Registered UK Charity: 1188649

